



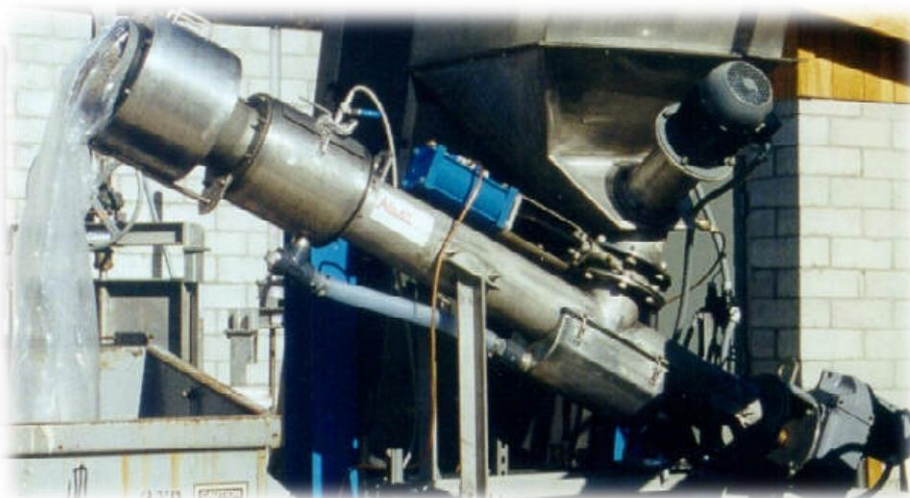
The Arlat washer/compactor is designed to capture solids removed by influent channel screens, either directly or following transport by a screw conveyor. The inlet chute directs the discharged material into the trough to be transported by the shaftless screw through the washer section, if applicable, and compactor section to the discharge chute.

The tumbling action of the screw works to break down larger pieces of organic material and helps to remove organic material that has become attached to the non-biodegradable screenings that are removed from the influent stream. The screw does not carry the screenings through the compactor zone, it is product pushing product that compacts and dewateres the screenings to provide a cleaner and dryer discharge, no springs, doors or fingers are used which minimizes set-up and maintenance. The organic laden water that is removed from the screenings is directed back to the influent channel.



Additional screenings washing may be required due to the amount of organics that can be removed by today's fine screens. Arlat offers two styles of washer so these necessary organics can be reclaimed for further use downstream in the treatment plant.

Although the majority of the washer/compactor components are manufactured from 304SS, UHMW is widely used to significantly reduce wear, noise and replacement costs compared to competitive machines.



SDP WASHER/COMPACTOR





SDP WASHER/COMPACTOR



A variety of options are available to best fit your application:

- 316 Stainless frame and component construction for more corrosive installations
- Additional washer sections are available
 - Inline washer provides wash water as the screw carries the screenings
 - Batch washer will provide more aggressive washing prior to entering the transport section of the SDP
- Discharge bagger option can be used to contain putrescent odours
- Heat tracing for cold weather outdoor installations
- Full PLC control panels are available that can offer;
 - Rotation monitoring
 - Fluid differential monitoring
 - Speed control for the screen drive system
 - Continuous mode operation during high flow periods
 - Full head works package integration



Technical Information:

- Shaftless flighting
 - (3) sizes ranges are available to best suit your channel size and application
 - Flighting is constructed from AR400 for wear resistance to promote long service life
- Material of construction
 - Inlet chute, formed 14 Ga sheet
 - Trough/transport section, formed 12 Ga sheet
 - Screw wear liner, ½" UHMW
 - Mounting/Pivot frame, painted structural carbon steel
- Drive Assembly
 - 2HP and 3HP motors are typical selections for wastewater applications
 - Drives are protected from excessive current and over-torque
- Screening removal calculators are available to aid in selection of the right combination of screw size, pitch and speed for your application